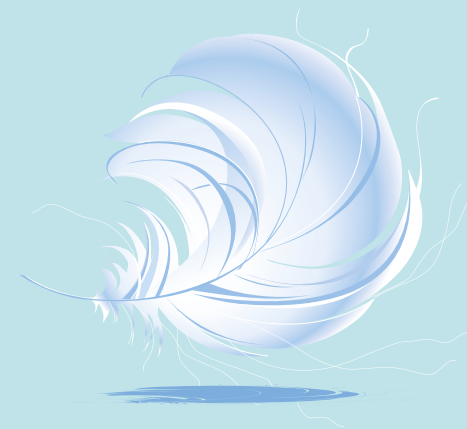


OUR GENTLE DENTAL CARE PLAN

Our aim is to provide high quality care and treatment in a relaxed, comfortable and safe environment. We are committed to continuing education and keeping abreast of advances in modern dentistry. Research shows that preventive dentistry delivered on a regular basis greatly reduces the risk of dental disease and provides a platform for a lifetime of improved oral health. We encourage such an approach and with this in mind, we have joined with DPAS Limited to design a dental plan to reward loyal patients. This plan will be administered by DPAS who will make a separate arrangement with you to manage your payments under the plan. The plan will provide advantages both to you and to us. It will allow us to plan your dental care more effectively and provide the best chance of keeping you dentally fit. The advantage for you is that it should reduce the need for future treatment and you will have the peace of mind that all of your preventive dental care will be covered by convenient monthly payments. Upon joining the dental plan, you will also be eligible to request assistance from the Worldwide Dental Emergency Assistance Scheme for dental emergencies or dental traumas whilst at home or abroad (see overleaf).



WHO IS OUR PLAN FOR?

Our plan is designed for patients who wish to attend the practice on a regular basis and have peace of mind that their routine dental care is covered.

YOUR BENEFITS

- all your preventive dental care is included
 - payment by convenient monthly Direct Debit, at a reduced rate
 - guaranteed registration with the practice and continuing access to your dentist
 - early identification of dental problems to prevent pain, discomfort and inconvenience
 - 15% discount on treatment fees – excluding implant treatment
 - access to a 24 hour dental emergency helpline 365 days per year
 - emergency treatment within surgery hours*
 - eligibility to request assistance from the Worldwide Dental Emergency Assistance Scheme (see overleaf).
- * does not include temporary crowns, bridges or definitive restorations.

WHAT DOES OUR PLAN INCLUDE?

Our Gentle Dental Care Plan A costs £13.10 per month and covers:

- two oral health examinations per year
- one scale and polish hygiene appointment per year
- x-rays as required
- 15% discount on treatments
- temporary fillings and pain relief
- diet and oral hygiene advice
- membership card with 24 hour helpline numbers for dental emergencies at home or abroad
- eligibility to request assistance from the Worldwide Dental Emergency Assistance Scheme (see overleaf).

Our Gentle Dental Care Plan B costs £16.00 per month and covers:

As plan A but also including:

- one extra scale and polish hygiene appointment per year.

Our Gentle Dental Care Plan C costs £23.00 per month and covers:

As plan A but also including:

- three extra scale and polish hygiene appointments per year.

The monthly plan cost includes the charges for management and administration payable by you to DPAS.

Treatment not covered by this plan can be paid for separately.

HOW DO YOU JOIN OUR PLAN?

After your initial assessment all you have to do is complete a registration form for us and a Direct Debit mandate and authorisation form for DPAS.

In addition to your first monthly payment, an initial registration fee of £10 per person will be payable by you to DPAS and will be included in your first Direct Debit payment.

This plan has a minimum membership term of 12 months. If you cancel your membership within this period you will be liable for any discounts given on any treatment received during this period. After 12 months, you can cancel your membership by simply giving us one month's notice.

WHAT HAPPENS IN AN EMERGENCY?

You will have access to a 24 hour, 365 day worldwide dental emergency helpline, which will endeavour to find an English speaking dentist to assist you.

ANY QUESTIONS?

If you have any questions about our dental care plan, please contact our reception team who will be happy to provide further information and guidance.

Terms within this brochure are subject to change without notice.

HOW DOES THE WORLDWIDE DENTAL EMERGENCY ASSISTANCE SCHEME WORK?

Whilst a member of the dental plan, should you suffer a dental trauma, a dental emergency or be diagnosed with oral cancer you will be eligible to make a request for assistance from the Worldwide Dental Emergency Assistance Scheme. The Scheme responds to such requests on a wholly discretionary basis. This means that, whilst the Scheme aims to provide benefits in most cases, the Scheme has no obligation to provide any benefit unless the Scheme Manager (the person appointed to administer the Scheme) first decides (in its sole and absolute discretion) that the Scheme should provide a benefit. There are some circumstances in which the Scheme is not designed to help (these situations being similar to exclusions under an insurance policy) and these are explained in more detail in the Worldwide Dental Emergency Assistance Scheme Handbook. The Scheme Manager will look at each case individually to assess the request for a benefit. Certain restrictions and limitations may apply in the event that your request for assistance is accepted and it is possible that in some cases the Scheme Manager will decide to provide no benefit.

If your request for assistance is accepted by the Scheme Manager you will be eligible to receive benefit payments from the Scheme in the following situations (up to the limits set by the Scheme and published from time to time):

- ✓ The cost of dental treatment by any dentist up to a maximum of £10,000 for any one incident of dental trauma
- ✓ The cost of:
 - emergency call-outs
 - pain relief or emergency temporary treatment
- ✓ A specified amount for each complete 24-hour period of hospitalisation wholly or partly under the care of a consultant who specialises in dental or maxillofacial surgery
- ✓ A specified amount if you are diagnosed with oral cancer and this is the primary cancer site

You will also have 24 hour access to a worldwide dental emergency helpline.

Please refer to the Worldwide Dental Emergency Assistance Scheme Handbook for full details.

The Worldwide Dental Emergency Assistance Scheme is operated by Worldwide Assistance Ltd (Company No. 10907861), a company registered in England and Wales.

Registered Office: Cambrian Works, Gobowen Rd, Oswestry, Shropshire SY11 1HS.

The Worldwide Dental Emergency Assistance Scheme is NOT an insurance product and is NOT regulated by the Financial Conduct Authority.

85400-PPmaBad DL0118DS-v0519

Dentists

Dr Chris Pritchard BDS
Dr Alice Thomson BDS

Contact

Gentle Dental Ltd
85 South Street
St Andrews
Fife
KY16 9QW
Telephone: 01334 475433

Opening Hours

Monday: 9.00am - 5.45pm
Tuesday: 9.00am - 5.45pm
Wednesday: 9.00pm - 7.00pm
Thursday: 9.00am - 5.45pm
Friday: 9.00am - 5.30pm

Emergencies

01334 475433
Away from home helpline:
(UK) 0800 525631
(Abroad) +44 1747 820841

gentle dental care

gentle dental care plan



gentle dental care