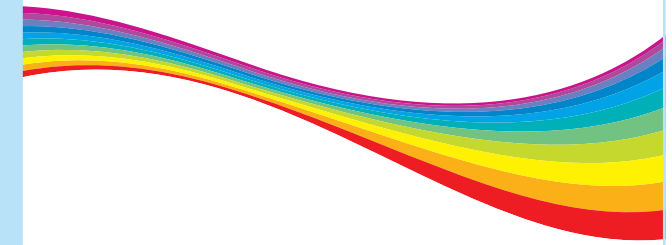


KING SQUARE MAINTENANCE PLAN

Our aim is to provide high quality care and treatment in a relaxed, comfortable and safe environment. We are committed to continuing education and keeping abreast of advances in modern dentistry.

Research shows that preventative dentistry delivered on a regular basis greatly reduces the risk of dental disease and provides a platform for a lifetime of improved oral health. We encourage such an approach and with this in mind, we have joined with DPAS Limited to design a dental plan to reward loyal patients. This plan will be administered by DPAS who will make a separate arrangement with you to manage your payments under the plan. The plan will provide advantages both to you and to us. It will allow us to plan your dental care more effectively and provide the best chance of keeping you dentally fit. The advantage for you is that it should reduce the need for future treatment and you will have the peace of mind that all of your preventative dental care will be covered by convenient monthly payments. Upon joining the dental plan, you will also be eligible to request assistance from the Worldwide Dental Emergency Assistance Scheme for dental emergencies or dental traumas whilst at home or abroad (see overleaf).



YOUR BENEFITS

- all your preventative dental care is included
- payment by convenient monthly Direct Debit, allowing you to budget
- guaranteed registration with the practice and continuing access to your dentist
- early identification of dental problems to prevent pain, discomfort and inconvenience
- appointment times to suit you wherever possible
- discount on treatment fees
- **NEW!** 10% discount on cosmetic dental treatments including Teeth Whitening, Smile Makeover, and Veneers
- priority booking in the event of a dental emergency
- access to a 24 hour dental emergency helpline 365 days per year
- eligibility to request assistance from the Worldwide Dental Emergency Assistance Scheme (see overleaf).

WHO IS OUR PLAN FOR?

Our plan is designed for patients who wish to attend the practice on a regular basis and have peace of mind that their preventative dental care is covered.

WHAT DOES OUR PLAN INCLUDE?

Our Maintenance Plan 1 costs £17.43 per month and covers:

- two full dental examinations per year
- two dental hygiene sessions per year
- routine bitewing x-rays
- 10% discount on treatment fees
- **NEW!** 10% discount on cosmetic dental treatments including Teeth Whitening, Smile Makeover, and Veneers
- diet and oral hygiene advice
- eligibility to request assistance from the Worldwide Dental Emergency Assistance Scheme (see overleaf).

Our Maintenance Plan 2 costs £10.27 per month is as Maintenance Plan 1 apart from:

- one full dental examination per year
- one dental hygiene session per year.

Our Maintenance Plan 3 costs £13.24 per month is as Maintenance Plan 1 apart from:

- one dental hygiene session per year.

Our Maintenance Plan 4 costs £25.70 per month is as Maintenance Plan 1 plus:

- two extra dental hygiene sessions per year.

The monthly plan cost includes the charges for management and administration payable by you to DPAS.

Treatment not covered by this plan can be paid for separately.

HOW DO YOU JOIN OUR PLAN?

There is no need for an assessment. Joining is very simple. All you have to do is complete a registration form for us and a Direct Debit mandate and authorisation form for DPAS.

In addition to your first monthly payment, an initial registration fee of £10 per person will be payable by you to DPAS and will be included in your first Direct Debit payment.

If you choose to leave the plan for any reason you can do so by simply giving us one month's notice.

WHAT HAPPENS IN AN EMERGENCY?

You will have access to a 24 hour, 365 day worldwide dental emergency helpline, which will endeavour to find an English speaking dentist to assist you.

ANY QUESTIONS?

If you have any questions about our plan, please contact our reception team who will be happy to provide further information and guidance.

Terms within this brochure are subject to change without notice.

HOW DOES THE WORLDWIDE DENTAL EMERGENCY ASSISTANCE SCHEME WORK?

Whilst a member of the dental plan, should you suffer a dental trauma, a dental emergency or be diagnosed with oral cancer you will be eligible to make a request for assistance from the Worldwide Dental Emergency Assistance Scheme. The Scheme responds to such requests on a wholly discretionary basis. This means that, whilst the Scheme aims to provide benefits in most cases, the Scheme has no obligation to provide any benefit unless the Scheme Manager (the person appointed to administer the Scheme) first decides (in its sole and absolute discretion) that the Scheme should provide a benefit. There are some circumstances in which the Scheme is not designed to help (these situations being similar to exclusions under an insurance policy) and these are explained in more detail in the Worldwide Dental Emergency Assistance Scheme Handbook. The Scheme Manager will look at each case individually to assess the request for a benefit. Certain restrictions and limitations may apply in the event that your request for assistance is accepted and it is possible that in some cases the Scheme Manager will decide to provide no benefit.

If your request for assistance is accepted by the Scheme Manager you will be eligible to receive benefit payments from the Scheme in the following situations (up to the limits set by the Scheme and published from time to time):

- ✓ The cost of dental treatment by any dentist up to a maximum of £10,000 for any one incident of dental trauma
- ✓ The cost of:
 - emergency call-outs
 - pain relief or emergency temporary treatment
- ✓ A specified amount for each complete 24-hour period of hospitalisation wholly or partly under the care of a consultant who specialises in dental or maxillofacial surgery
- ✓ A specified amount if you are diagnosed with oral cancer and this is the primary cancer site

You will also have 24 hour access to a worldwide dental emergency helpline.

Please refer to the Worldwide Dental Emergency Assistance Scheme Handbook for full details.

The Worldwide Dental Emergency Assistance Scheme is operated by Worldwide Assistance Ltd (Company No. 10907861), a company registered in England and Wales.

Registered Office: Cambrian Works, Gobowen Rd, Oswestry, Shropshire SY11 1HS.

The Worldwide Dental Emergency Assistance Scheme is NOT an insurance product and is NOT regulated by the Financial Conduct Authority.

505-PPmaBad DL0118DS-v1124

Clinical Director & Implant Dentist

Ioannis Myridakis

DDS, MSc (Dental Implantology)

Principal Dentist

Marinela Myridaki

DDS, PG Cert Endodontology

Associate Dentists

Daria Socol DMD

Mihaela Florescu DMD

Hygienists

Therese Campiutti

FETC, PQC, Special Needs Diploma

Mr Prince Kurien Alex

Tracy Edwards

Contact

King Square Dental Practice

3 King Square

Bridgwater

Somerset

TA6 3DG

Telephone: 01278 422555

www.kingsquaredentalpractice.co.uk

Opening Hours

Monday	09.00 – 13.00	14.00 – 17.00
Tuesday	09.00 – 13.00	14.00 – 17.00
Wednesday	09.00 – 13.00	14.00 – 17.00
Thursday	09.00 – 13.00	14.00 – 17.00
Friday	09.00 – 13.00	14.00 – 16.00

Emergencies

01278 422555

Away from home helpline:

(UK) 0808 169 8117

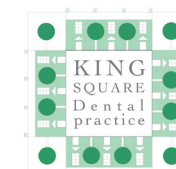
(Abroad) +44 1691 887 955

KING SQUARE DENTAL PRACTICE MAINTENANCE PLAN

AFFORDABLE HIGH QUALITY DENTAL CARE



K I N G



S Q U A R E
dental practice
3 King Square